

INSTALLATION GUIDE FOR LEWAPLUS PORTABLE

This document will guide you step by step through the installation of the LewaPlus Portable application.

FIRST TIME INSTALLATION

- 1) Download the LewaPlus Portable setup

Please start your Internet browser and invoke the URL

<http://lpt.lanxess.com/en/lewaplus-software/>

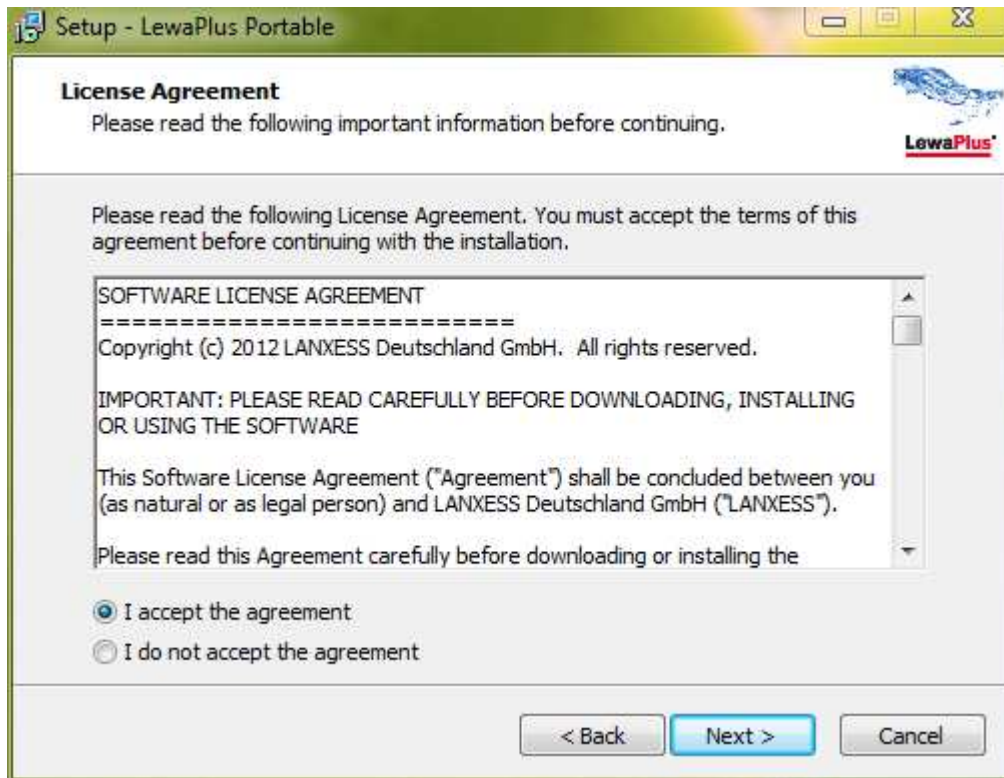
and locate the download link for the setup file **lewaplus-portable-v180-setup.exe**, where **v180** stands for the version number of LewaPlus, which may be different on the website.

- 2) The LewaPlus Portable setup application is digitally signed by Lanxess Deutschland GmbH. You may inspect the certificate by right clicking on the file and choosing the properties dialog. Installing LewaPlus Portable does not require administrative Windows rights. However, you must not select the **Program Files** folder of *Windows* to install the application.
- 3) Start the setup application downloaded in step 2. First, a small dialog will be presented from which you can choose the language used for the installation. If available the default language of your operating system will be preselected. Thereafter, a welcome screen will be displayed:



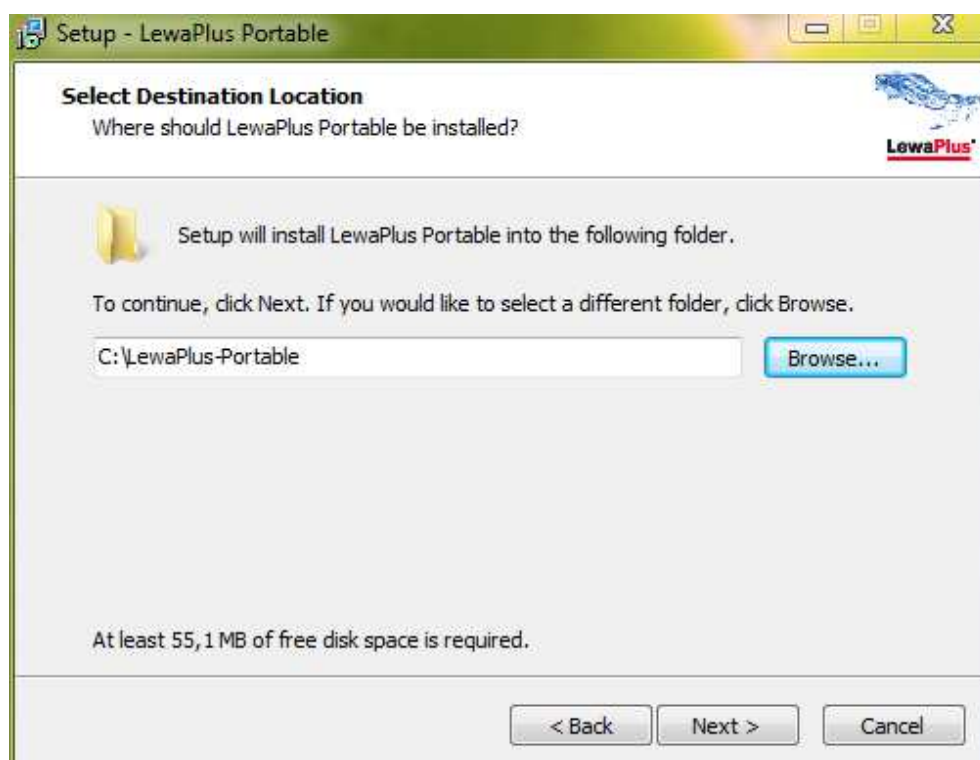
Click **Next** to proceed with the installation.

- 4) A license agreement screen will be displayed. Please carefully read the license agreement and select / **accept the agreement**, if you agree to the terms of use listed in the displayed text:

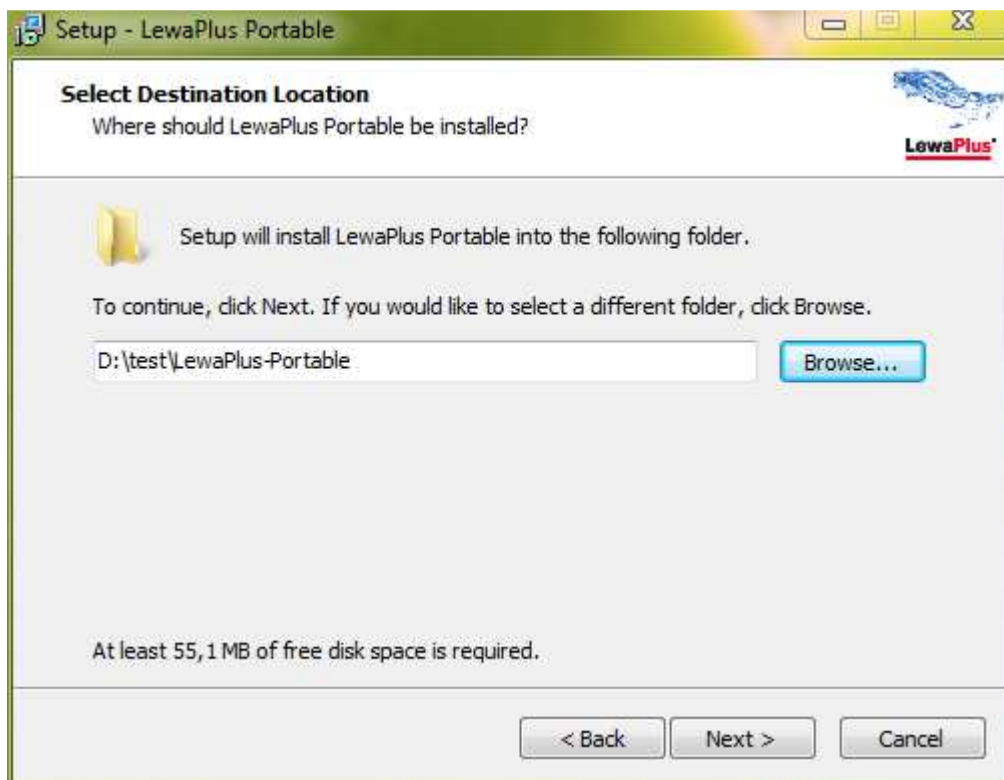


Click **Next** to continue.

- 5) In this step you are asked to select a destination location, where LewaPlus Portable should be installed. As a default the folder LewaPlus-Portable on the system drive is selected. However, you may change this by directly typing into the field or by using the Browse button which will present you the standard folder selection dialog of Windows.



You may select a folder on your hard disk, on a USB stick, or on a removable hard disk drive. Please do **not** select a network drive. LewaPlus is not designed to work from a network drive. You may experience data loss, if you don't adhere to this restriction.



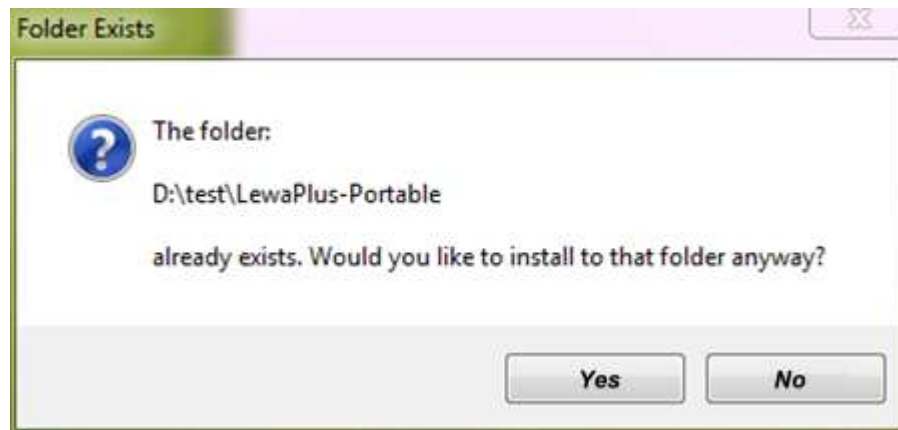
Please observe that the setup will always append the folder name **LewaPlus-Portable** to the folder selected from the folder selection dialog. Of course, you may change the name to your preference.

Click **Next** to continue.

- 6) If the selected folder does not yet exist, you will be asked to allow the creation of the folder:

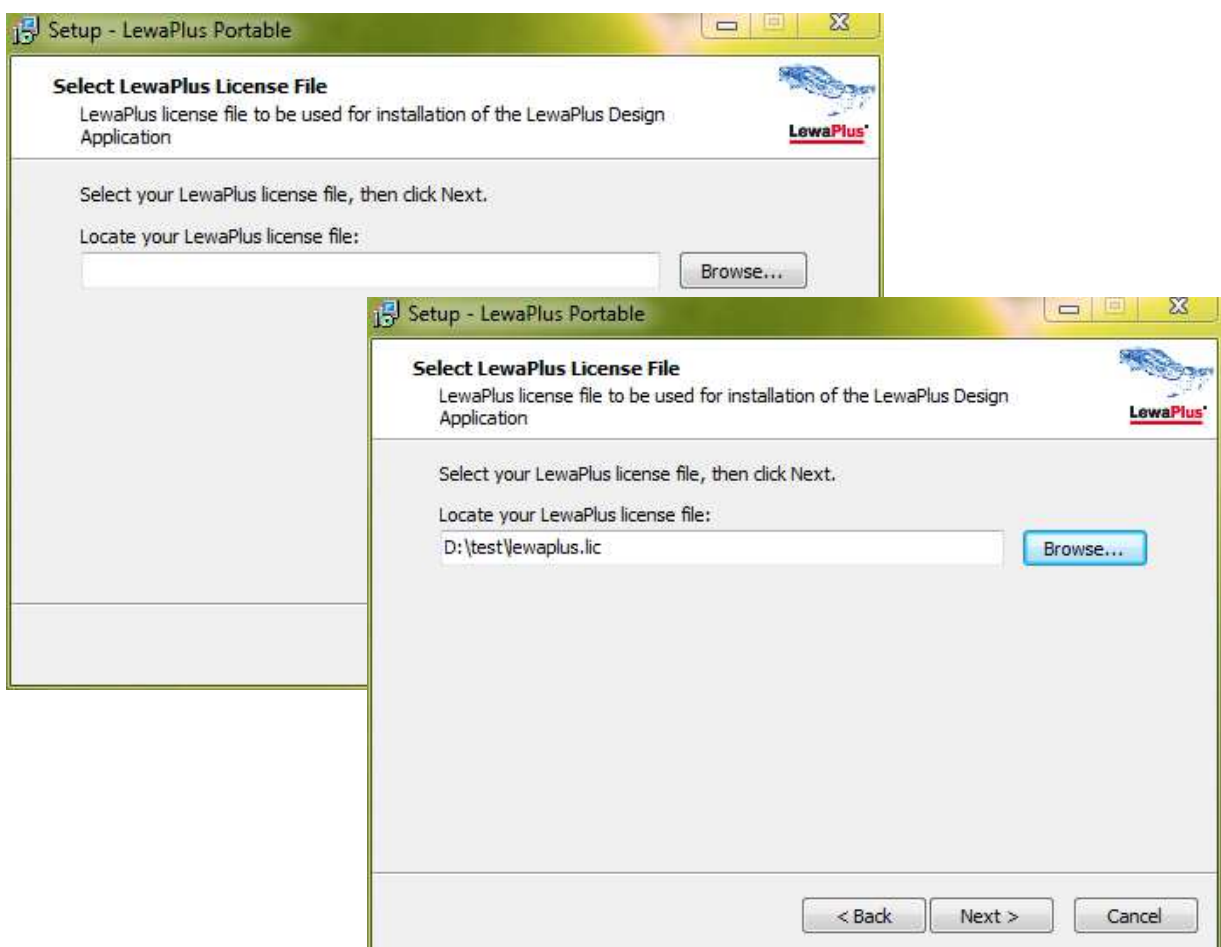


If the selected folder already exists – for example, if you have a previous version of LewaPlus Portable installed, you will be asked to allow the installation in the existing folder:



Click **Yes** to let the setup create or use the selected folder, and to continue the installation. If you are upgrading an existing LewaPlus installation, please skip to step **11** on page **7**.

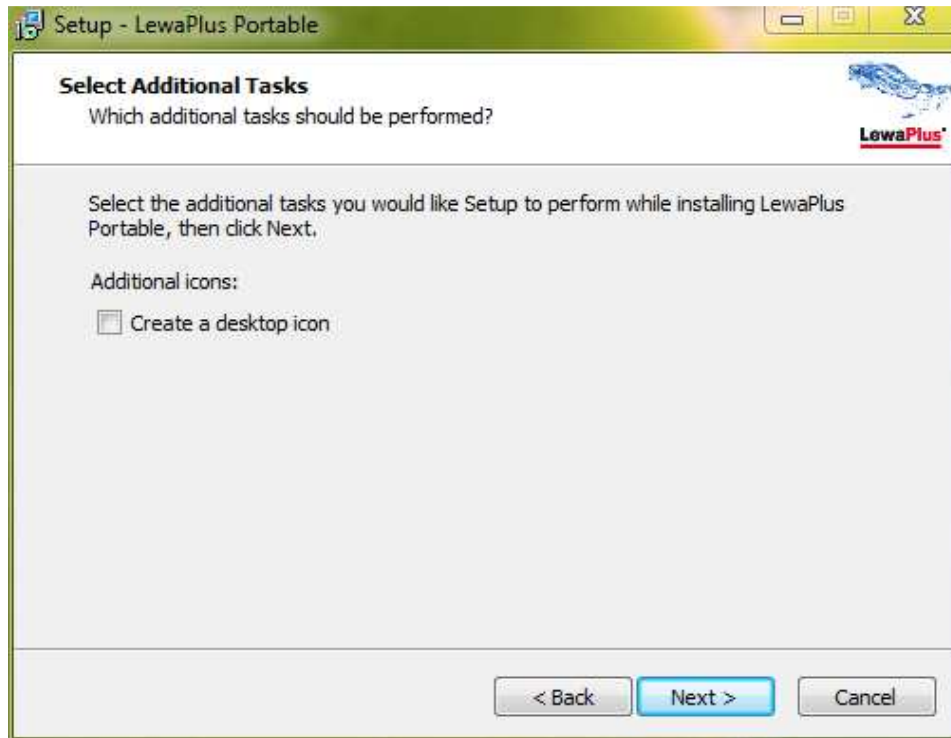
- 7) For a first time LewaPlus installation you will now be asked to locate your LewaPlus license file on your hard disk. If you haven't done so yet, please register for a LewaPlus trial license on the Lanxess LPT website (see step 1 for the URL). You will have received your license file by e-mail. Please save the license file contained in that e-mail to your hard disk. Please click the **Browse** button to display a file selection dialog:



Alternatively, you may enter the path to your license file directly by typing it into the entry field.

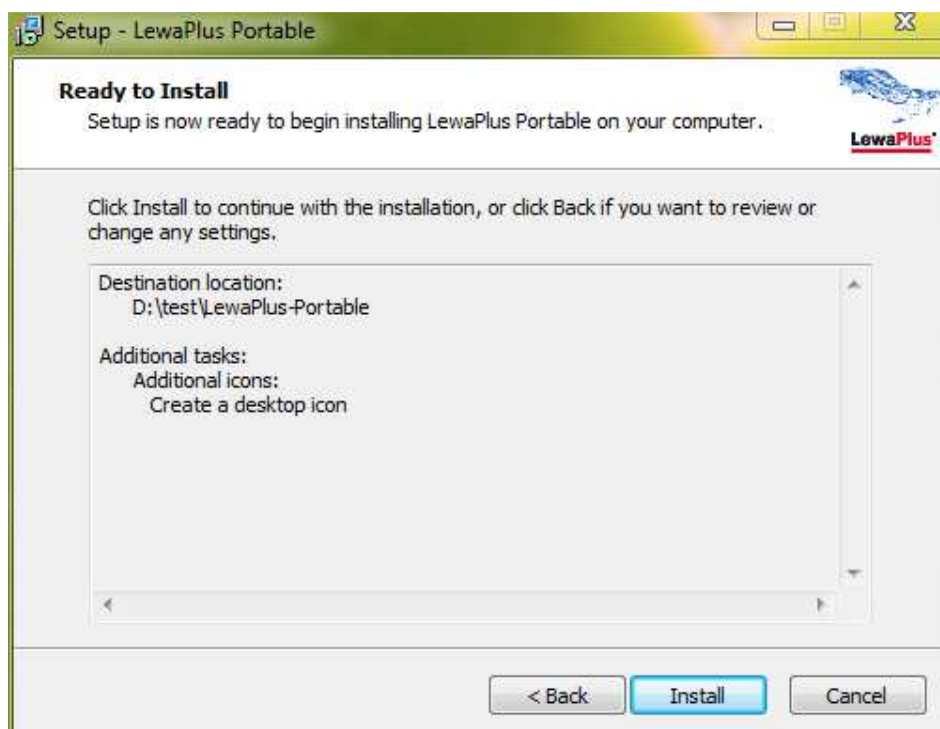
Please click **Next** to continue. Your license file will now be checked to determine whether it is valid, or not. If it is not valid, an error message will be displayed.

- 8) You may select to create a desktop icon as a shortcut to start the LewaPlus application. This option is deselected by default, since creating a desktop icon might not be appropriate if LewaPlus is installed on a removable device.



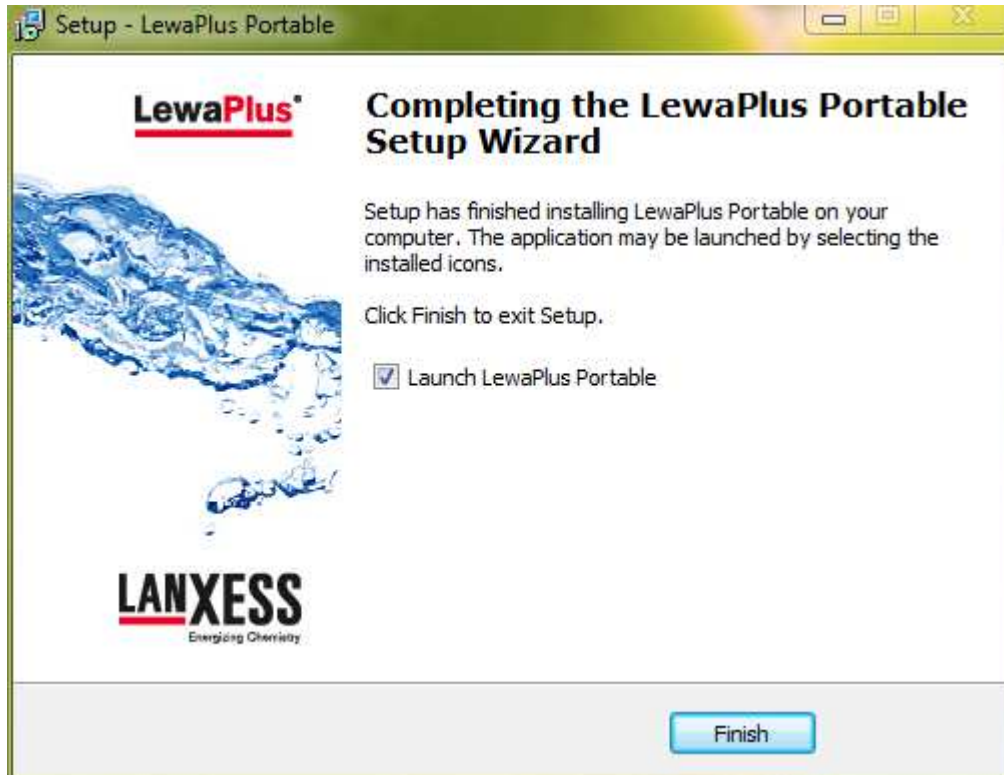
Click **Next** to continue.

- 9) Before the installation begins, an information dialog similar to the following will be displayed:



Please click **Next** to continue.

- 10) During the installation a progress bar will be displayed. After all files belonging to the LewaPlus application have been copied to the destination folder, a completion information will be displayed, and you will be offered to immediately launch LewaPlus:



Note: If you did not select to create a desktop icon in step 8, please double click the file *lwlaunch.exe* in the folder, in which you installed LewaPlus, to launch the LewaPlus design application.

Click **Finish** to terminate the setup.

CONGRATULATIONS, YOU HAVE SUCCESSFULLY INSTALLED LEWAPLUS PORTABLE!

UPGRADING AN EXISTING LEWAPLUS INSTALLATION

- 11) Please verify that you selected the correct path to your existing LewaPlus Portable installation in step 5. You must select the parent folder of your existing installation, if you used the default installation folder name **LewaPlus-Portable**:

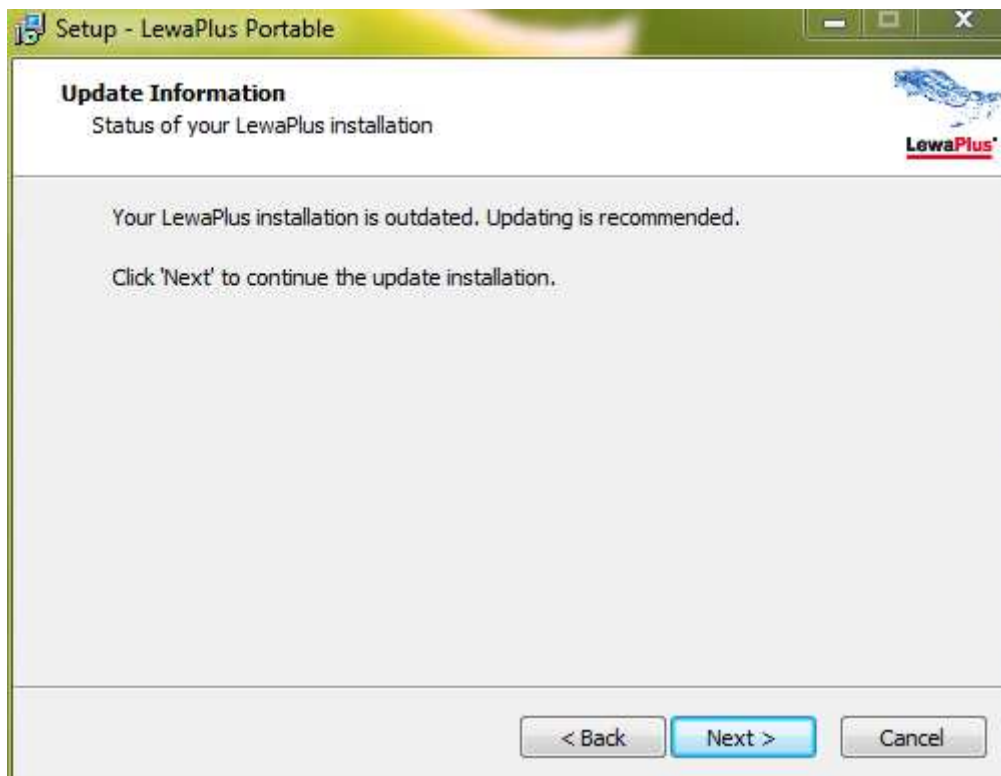


You may have to remove the automatically appended folder name **LewaPlus-Portable**, if you used a different folder name for your previous installation.

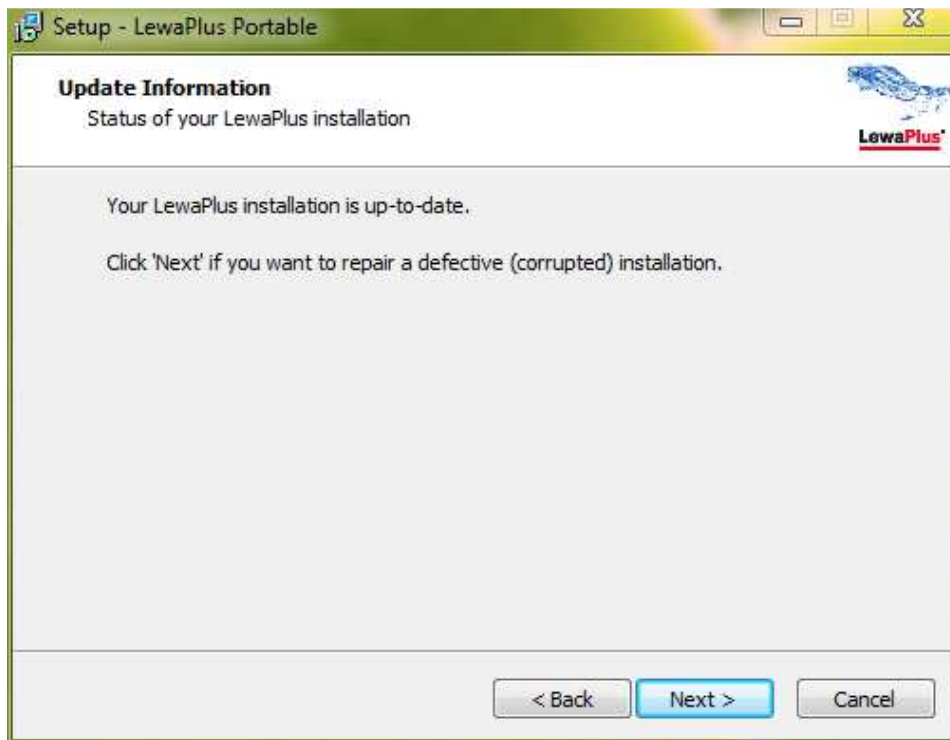
- 12) After you have clicked **Yes** in step 6, the license and version of your existing LewaPlus Portable installation will be checked.

If your installed LewaPlus license is valid, the setup will allow to perform an upgrade of your existing installation. It depends on the result of the version check, the details of which will be displayed on the Update Information screen.

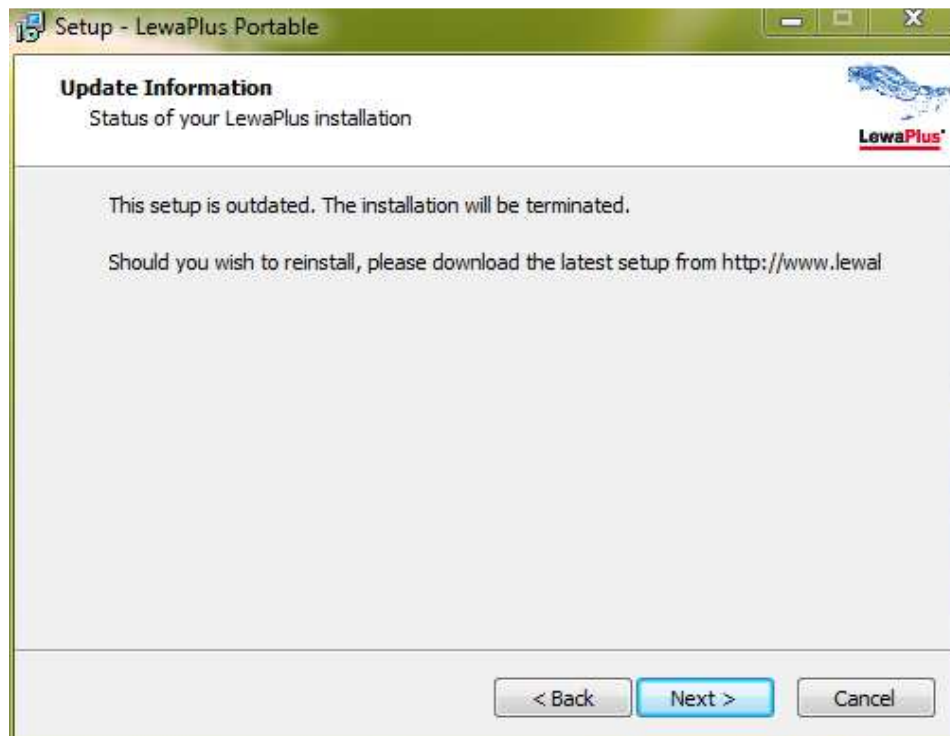
- a) If an outdated version was found, an update will be recommended:



- b) If an up-to-date version was found, you will be given the choice to repair a defective installation. This can be useful, if an update performed through the integrated update feature of LewaPlus failed for some reason:



- c) If you have a newer version installed than is included in the setup, the setup will be terminated:



Please click **Next** to perform the update (or terminate the setup in case c)). For cases a) and b) skip back to step 8 on page 5.